

Kia maintains uniform prices and terms nationwide to earn customers' trust.

Differences between information in the brochures and products sold may occur due to discrepancies with the printing date of brochures. Specifications may change due to suppliers' circumstances. Photographs may depict optional features. Please refer to the latest price list and contact a sales representative to make a purchase.

- Colors depicted in photographs may differ from the actual colors due to printing limitations.
- Navigation functions and information displayed may vary depending on when the navigation system was updated.
- Caution: For safe driving, please read the user manual before the initial use of the vehicle.
- Please recycle this booklet to protect the environment.
- Customer service center: 080-200-2000



This PDF file is for reference only.

Differences with actual models sold may occur due to discrepancies with the time of printing. Please refer to the latest monthly price list and consult a sales representative to make a purchase.



10/01
2024
Date of publication

The Kia EV3



My Moving Infra The Kia EV3

With ample capacity battery, flexible space,
and life-extending technology,
The Kia EV3 makes everything my infrastructure.



Color Line up



Aventurine Green (AG3)



Shale Grey (EBD)

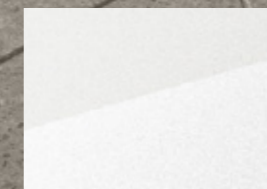


Ivory Matte Silver (ISM)

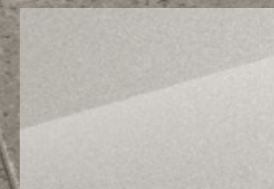


Frost Blue (EBB)

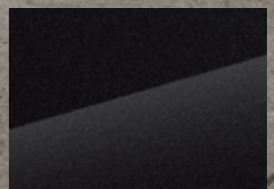
Specifications above may vary by trim level, engine and options.



Snow White Pearl (SWP)



Ivory Silver (ISG)



Aurora Black Pearl (ABP)

My Moving Infra
The Kia EV3
 The EV life you've always wanted,
 EVs make it all possible.



Smart Infrastructure

-
- Kia AI Assistant
- Wireless software update
- Kia Connect Store



Energy Infrastructure

-
- Maximum range of 501 km
- Fast charging in 31 minutes
- Interior and Exterior V2L

※ Maximum range: 501 km (Long-range 17" wheel without a built-in cam)
 ※ Fast charging: 31 minutes (Long-range, 350 kW, 10→80%)



Spatial Infrastructure

-
- Wide interior space of E-GMP
- 1-row relaxation comfort seat
- Sliding console table



Aventurine Green (AG3) / Specifications above may vary by trim level, engine and options.

DESIGN

EV3 showcases Kia's design philosophy Opposites United and in particular Joy for Reason.

The contrast between the SUV's dynamic silhouette and delicate design touches completes the Kia EV3's sensitive and high-tech image.





Ivory Matte Silver (ISG) / Specifications above may vary by trim level, engine and options.



Frost Blue (EBB)

Exterior

The SUV's sleek voluminous feel is balanced by a tiger face and Star Map headlamps. The geometric design of the vertical and horizontal lines presents a unique, creative and futuristic image of the EV3.



10 Material Solutions

With respect and responsibility for nature, Kia strives to use resources responsibly by applying 10 material solutions to provide sustainable products and services.



Bio paint
extracted from plant-based materials

Recycled PET / Fishing net carpets
made with waste PET

BTX-free paint
free of substances harmful to humans

PCM plastic
made from recycled waste plastics

Bio-plastic
extracted and synthesized from sugar cane

Bio PU leather alternative
containing cornstarch

Recycled PET yarns
from waste PET

Recycled PET fabric
from recycled plastics

Bio PU foam
based on castor oil

Recycled PET felt
made of recycled plastics

Light Gray Interior / Specifications above may vary by trim level, engine and options.

High-Tech

Kia AI Assistant, OTA software updates and Kia Digital Key 2 give drivers access to the EV3's unique advanced infrastructure.



Panoramic Wide Display / Kia AI Assistant
Cluster(12.3"), climate control (5") and infotainment (12.3") are integrated into a wide panoramic display for convenience and luxury. Kia AI Assistant adds to the existing Voice Assistant to offer customers a unique in-car experience.



OTA Wireless Software Updates / Kia Connect Store
When a new software update is available, the system asks for user authorization when the vehicle is parked and powered down, and then starts the wireless software update. After purchasing a car, customers can separately purchase and access new features offered by the Kia Connect Store for a limited period or permanently. (Streaming Plus, Display Themes, Arcade Games, Smart Regenerative System Plus)
※ For details, visit the Kia Connect Store. The images and contents of the Kia Connect Stores are subject to change without notice.

Kia Digital Key 2
Without a smart key, users can lock and unlock the door and start the engine with an iPhone, Apple Watch or Android smartphone, and this function can be shared with up to 15 devices.
※ Refer to the official Kia Connect website for supported devices.
※ Currently, only Apple Watch offers the feature.

Surround View Monitor / Blind-Spot View Monitor
Shows the image of the vehicle's surroundings to assist with safe parking. When a turn signal is turned on, the display shows the rear and side view of the selected direction.

12" Head-Up Display
The 12" high-definition Head-Up Display shows key driving information on the same theme shown on the cluster and navigation system.

Specifications above may vary by trim level, engine and options.

SPACE

EV3 offers a comfortable, spacious interior with a sliding console table that changes to meet user needs, a 1-row relaxation seat, and interior V2L.



Sliding Console Table
The sliding console table can be used for various purposes when the car is stationary.

※ Do not place objects on the sliding table while driving. In the event of an accident, sudden stop or sharp turn, objects placed on the table may fall, increasing the risk of injury. If an object falls under the driver's seat, it may disable the pedal operation.



First-row Relaxation Comfort Seat
The relaxation comfort seat can be fitted to the driver's and front passenger's seats, allowing users to rest comfortably in a weightless position.



2-level Luggage Board
The 2-level luggage board allows users to adjust the height to suit their luggage, while the luggage compartment underlay optimizes stowage space.



Large Trunk Capacity
Second-row cargo space and a large opening width make it easy to load.



Interior V2L Outlet
By plugging into the outlet on the lower part of the second-row seat, users can conveniently charge electronic devices using 220 V power.

*Indicates that a virtual image has been used for illustrative purposes. / Specifications above may vary by trim level, engine and options.



Range per charge

501 km / 350 km

(long-range 17" wheel, without a built-in cam)

(standard 17" wheel)

Fast charge (10%→80%)

31 min / 29 min

(long-range, 350kW)

(standard)

- ※ The above charging time is based on the test results measured by Kia R&D Center at room temperature, and may vary depending on battery temperature, charging electricity, battery deterioration, ambient temperature, etc.
- ※ The above driving range is based on standard mode which is the certification standard of the Ministry of Trade, Industry and Energy, and may vary depending on road conditions, driving style, load, maintenance status and outside air temperature.
- ※ As the outside temperature drops, especially in winter, the battery performance may deteriorate and the charging time may increase or driving range may decrease.

Frosted Blue (EBB) / Specifications above may vary by trim level, engine and options.

EV-Life

Users can enjoy the maximum power of the E-GMP with the longest range of 501km and fast charging in 31 minutes. Kia's e-life package, which includes charging, maintenance and residual value coverage, ensures a worry-free EV life.

※ See e-life package on the back cover of this catalog.



Exterior V2L Connector

The exterior V2L connector allows various electronic devices to be used outside the vehicle via V2L. EV3 offers users a convenient experience in various outdoor environments.



Plug in & Charge (PnC)

Without authentication at E-pit charging stations, charging starts by plugging into the charging inlet port, with automatic payment when charging is complete.

※ Users must obtain an E-pit membership, and join the PnC service at E-pit stations.



i-PEDAL 3.0

At all stages of regenerative braking, the accelerator pedal can be used to adjust the car's speed or stop it. A memory function is available for reverse parking and restarting.

Frosted Blue (EBB) / Specifications above may vary by trim level, engine and options.
 ※ The reverse parking function can be switched on or off in the system settings menu.

SAFETY



01



02



03



04



05



06



07

01. Highway Driving Assist 2 (including Lane Change Assist)

Maintains a safe distance from the vehicle in front on motorways and highways, and maintains the speed set by the driver while keeping the car in the center of the lane, even on curved roads.

Moves the vehicle to the other side of the lane if it gets too close to the vehicle driving in next lane.

If the turn signal is activated while the steering wheel is held and the vehicle is driven above a certain speed, the vehicle automatically changes lanes in the direction of the activated turn signal.

02. Steering Wheel Grip Detection (HoD)

The capacitive touch sensor can detect the electrical characteristics of the driver's hands placed on the steering wheel to determine whether the driver is holding the wheel for more comfortable driving.

03. Navigation-based Smart Cruise Control

When driving on motorways and highways, it helps you maintain a safe speed in line with the traffic.

It automatically reduces the speed of the vehicle in a safe speed zone and on curved roads or ramps, and the car returns to the set speed when you pass them.

04. 9 Airbag System*

By installing an airbag in the center of the first row, injuries between a passenger and the driver can be minimized in the event of a collision. By installing airbags on the sides of the second row seat, passengers can be protected in the event of an accident.

05. Remote Smart Parking Assist

The driver can move the car forward or backward remotely from outside using the Smart Key.

06. Forward Collision Avoidance Assist

By detecting the risk of collision with a vehicle, two-wheeler, pedestrian, or cyclist in front, it alerts you and helps you brake to reduce or avoid an impact. At intersections, the system detects the risks of collision with oncoming vehicles when turning left or right, oncoming vehicles while driving or oncoming vehicles from the left or right when passing through the intersection, and assists braking.

When changing lanes, the system detects the risk of collision with oncoming vehicles from the opposite direction or vehicles in the next lane, or cars or pedestrians on the edge of the lane in front, and assists in changing direction.

07. Rear Cross-Traffic Collision-Avoidance Assist

It warns you of the risk of a collision with an oncoming vehicle on either side of you when backing up. If the risk of a collision remains high after the warning, your car will automatically intervene with braking assistance.

*Indicates that a virtual image has been used for illustrative purposes. / Specifications above may vary by trim level, engine and options.

GT-line

Bold expressions such as technical graphics of verticality and horizontality, large black panels, and a triangular wing shape at the rear create a sporty impression and extended presence.

Front Bumper



Black Outside Mirror



GT-line 19" Machined Face Wheel



Rear Bumper



Snow White Pearl (SWP) / Specifications above may vary by trim level, engine and options.

GT-line

GT-line Charcoal & White Interior



Snow White Pearl (SWP) / Specifications above may vary by trim level, engine and options.

Equipment



17" Machined Face Wheels 19" Machined Face Wheels 19" Machined Face Wheels (GT-line)



LED Headlamp



Small Cube Projection LED Headlamp



LED Rear Tail Lamp



Rear LED Center Lamp



Black High-gloss Surround Molding



First-row Auto Flush Door Handle



Frunk

KIA Genuine Accessories

After-market Products



Console Cabinet Extension Cup Holder Safety Hammer Phone Holder



Smart Key Leather Case Full Cover Trunk Mat Coil Mat Paint Protection Film Card Holder



Emergency Slow Charging Cable (220V ICCB) C to USB-A Conversion Gender* Sunvisor Sunglasses Case Luggage Screen Luggage Net

※ The aftermarket products listed above can be purchased at the Car & Life Mall (kia.auton.kr) using Kia Member Points
※ For details, visit the Car & Life Mall (kia.auton.kr)
※ * This conversion gender is only available for Kia products, and is not available for other products and car brands. ※ Some items will be launched in sequential order.



Console



Sliding Console Table*



Headrest



Mesh Headrest



Soft Material Crash Pad



Crash Pad Fabric Cover



Panoramic Wide Display



Dynamic Ambient Light



Harman Kardon Premium Sound



Luggage Undertray

*Indicates that a virtual image has been used for illustrative purposes. / Specifications above may vary by trim level, engine and options.

Exterior Colors

Matte

Glossy



Ivory Matte Silver (ISM)



Snow White Pearl (SWP)



Ivory Silver (ISG)



Shale Grey (EBD)



Aventurine Green (AG3)



Frost Blue (EBB)



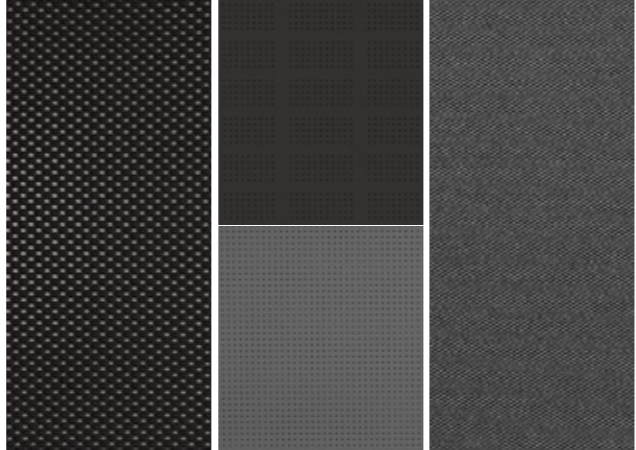
Aurora Black Pearl (ABP)

Interior Colors

Air / Earth



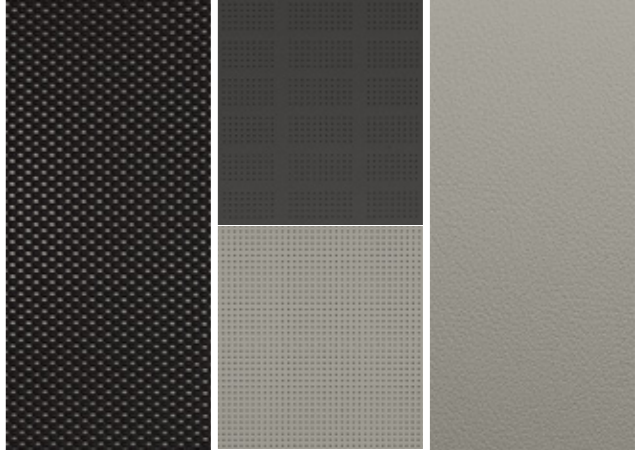
Medium Gray Interior



Earth



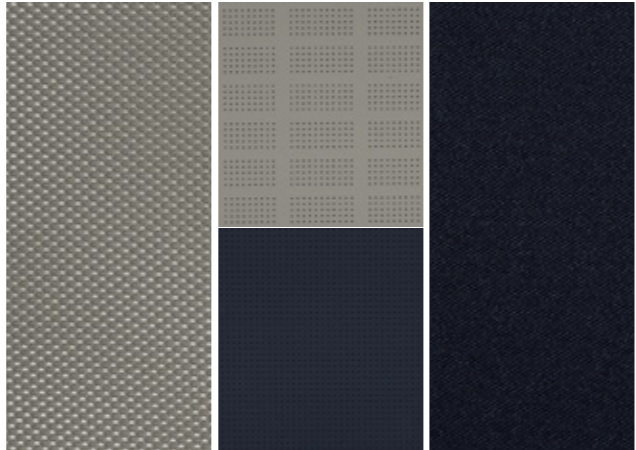
Light Gray Interior



Air / Earth



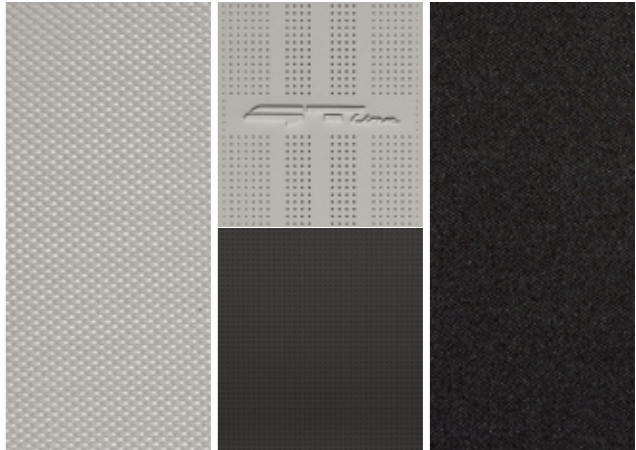
Navy Interior



GT-line



Charcoal & White Interior



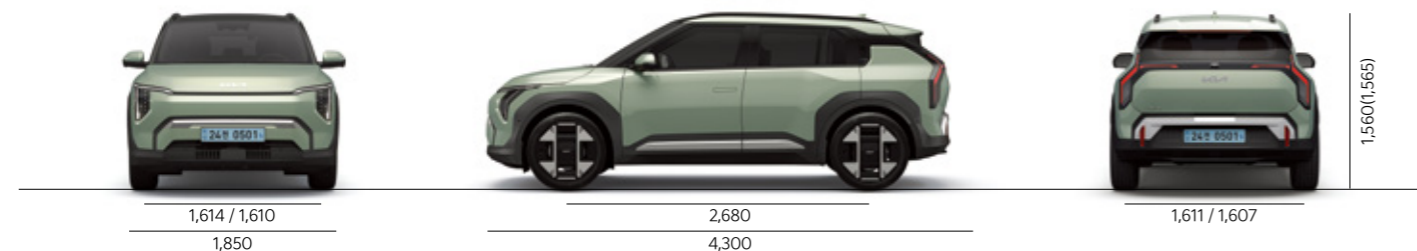
Specifications above may vary by trim level, engine and options.

Specifications

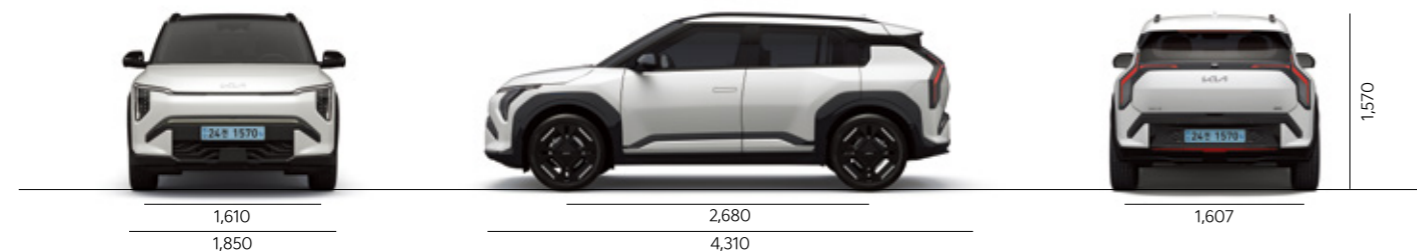
Dimension

※ Wheel track for 17/19" tires. / Overall height : () is the dimension including the roof rack. Unit: mm

Base Model



GT-line



※ Wheel track for 17/19" tires. / Overall height : () is the dimension including the roof rack. Unit: mm

Classification		Base Model	GT-line
Overall length	(mm)	4,300	4,310
Overall width	(mm)	1,850	1,850
Overall height	(mm)	1,560(1,565)	1,570
Wheel base	(mm)	2,680	2,680
Wheel tread	Front (mm)	1,614 / 1,610	1,610
	Rear (mm)	1,611 / 1,607	1,607
Battery	Type	Lithium ion	Lithium ion
	Capacity (kWh)	58.3 / 81.4	58.3 / 81.4
Electric Motor	Max. Power (kW)		150
	Max. Torque (Nm)		283

Fuel Economy and Class Reported to the Government

Model	Battery voltage (V) / Capacity (Ah)	Unladen vehicle weight (kg)	Class	Energy Efficiency Reported to the Government			Range per charge (km)			
				Combined(km/kWh)	City (km/kWh)	Highway (km/kWh)	Combined	City	Highway	
Standard	17"	369 / 158.2	1,750	2	5.2	5.6	4.7	350	380	313
	19"	369 / 158.2	1,765	2	5.2	5.6	4.7	347	373	314
Long-range	17" (without a built-in cam)	343 / 237.3	1,835	2	5.4	5.9	4.8	501	545	447
	17" (with a built-in cam)	343 / 237.3	1,835	2	5.4	5.9	4.8	500	544	446
	19"	343 / 237.3	1,850	2	5.1	5.5	4.6	478	518	428

※ The fuel efficiency figures (range) shown above are in standard mode. Actual figures may vary depending on driving style, vehicle load, maintenance, and outside temperature.

Kia e-life package

A package including all services that are necessary for EV life, such as charging, car care and warranty

1. Charging solutions

Customized charging solutions according to the living environment and charging type

Home charging | Public charging | Indirect charging

2. Care Program

Personalized EV care for both emergencies and everyday life

Car care | Specialized towing

3. Warranty program

A used car resale value guarantee program that starts when you buy the car

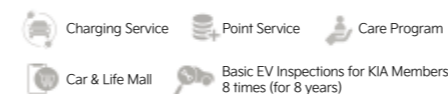
Resale value warranty



Kia e-life package
See detailed information

KIA Members Cards/Benefits

Benefits of KIA Members



※ Information on detailed benefits can be found on KIA Members website.

※ Kia EV dedicated concierge: 1899-0012 / Kia customer center: 080-200-2000

EV Charging Guide and Subsidies

EV Charging Guide



Check "Charging EVs" on KIA EV Guide page

- How to charge EVs (Standard/High-Speed/Ultra-Fast)
- Charging status (Destination/On-route Charging)
- Charging cards (MOE/Private Business Operator)
- Installation of charging stations

※ Scan QR Code > Connect to KIA EV Guide page

KIA EV Subsidies



Vehicle Models subject to Subsidy Payment [Government Subsidies]



Subsidy Payment Status [Local Government Subsidies]

※ Scan QR Code > Connect to Emission-Free Vehicle Portal website

※ Local Government Subsidies: Available when clicking "Local Government Subsidies by Vehicle Models" under the "Browse Reference Years" section

Application Procedures for EV Subsidies

1. Contract on vehicle purchase

Customer → Branch/Agent
Visit branch and contract on vehicle purchase



2. Application for Subsidies

Branch/Agent → Local Government
Check remaining vehicles assigned for local government subsidies and vehicle delivery date
Fill in the documents required and submit to the local government
Check if you were selected as a recipient



3. Consult for Charging Solution

Customer ↔ Branch/Agent
Check the type of charging stations and installation procedures
Give information on the desired charging stations by customers



4. Vehicle Delivery

Branch/Agent → Local Government, Customer
10 days before the expected delivery date
Finally check if you can receive subsidies
Check the availability and deliver



5. Apply for Subsidies

Branch/Agent → Local Government
Apply for local government subsidies after delivery and registration (Within 10 days after delivery)



※ Information above may vary depending on MOE/Local Government.
※ Visit Emission-Free Vehicle website for more information.

KIA Connect

Kia Connect is Kia's connected car service for wireless navigation updates, smartphone-based remote vehicle control, and emergency alerts for a safer and more convenient vehicle usage experience.

<h3>Remote control</h3> <p>Users can remotely control various functions in the vehicle using smartphone apps.</p>	<h3>Safety and security</h3> <p>Emergency assistance through the Kia Connect center in the event of an airbag deployment or roadside emergency (24/7, 365 days).</p>	<h3>Maintenance</h3> <p>Vehicle maintenance services including diagnosis of breakdowns, driving information, and wireless updates.</p>	<h3>Navigation</h3> <p>Optimal route guidance using real-time traffic information.</p>	<h3>streaming service</h3> <p>Use streaming services inside the vehicle without connecting a smartphone.</p>
---	--	--	--	--

※ Complimentary 5-years of service upon initial enrollment with the purchase of a vehicle followed by 5 additional years of light service (SOS emergency dispatch, automatic notification of airbag deployment, monthly reports, traffic information).

※ A link to a streaming service subscription is required to use Kia Connect's streaming service

※ If your streaming service subscription only supports mobile devices, it will not be compatible with Kia Connect's streaming service.

※ For more information, visit Kia Connect's Kakao Talk customer service center (search "기아커넥트" through the Kakao Talk search window and befriend).

※ The features/range of Kia Connect remote control may vary depending on trims and options.